

Simple as A, B, C



IMPORTANT:
A complete RackFrameSystem requires three cardboard packages:
MasterPack A, Depth Rail Set B & Height Rail Set C

- Master Pack A** - 8 connecting corners, 4 width rails, 4 nylon levelers/glides & B6 dog point screws
- Package B** - 4 depth rails, rack screws & washers
- Package C** - 4 height rails, rack screws & washers

Master Pack A contains four 17-1/2 inch rails the width of the RackFrameSystem. Package B contains four depth rails creating the rack depth of your RackFrameSystem. Package C contains four height rails creating the rack height of your RackFrameSystem. There are four standard depth rail sets and 10 standard height rail sets from which to choose.

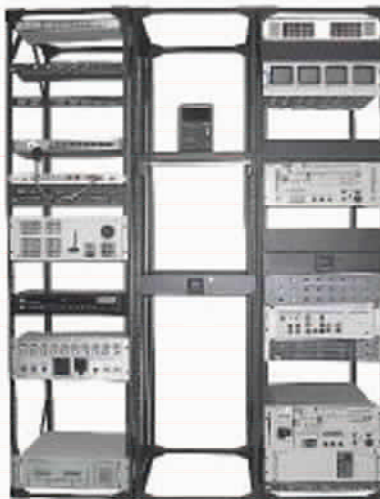
All eight connecting corners from Master Pack A are identical. Each connecting corner has 3 sides. Two of the sides have 4 holes. The remaining side has a 5th hole which is a 5/16" tapped hole to accommodate leveling feet, casters and either anchoring or attaching other RackFrame accessories.



Internal Detailed View of RackFrame Corner*

*Patent Pending

RackFrame shown includes optional twin-wheel casters and cross braces



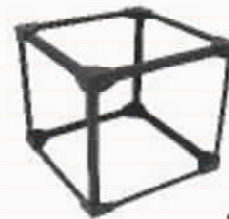
RackFrame shown includes optional cross braces



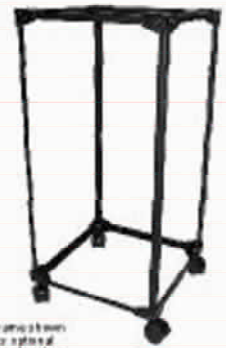
RackFrame shown includes optional twin-wheel casters

The RackFrameSystem:

- ✓ **Incredibly Strong**
- ✓ **"Knock-Down" Concept**
- ✓ **Uniquely Engineered**
- ✓ **Stackable**
- ✓ **Many Shapes & Configurations Available**
- ✓ **Many Options Available**
 - twin-wheel casters
 - cross braces
 - side handles
 - adjustable shelves
 - and many more!



RackFrame shown includes optional twin-wheel casters



Component Parts of Every RackFrame

Package A - Master Pack A

- (8) - Connecting Corners
- (86) - Dog point screws for assembling all (3) sets of rails,
- (4) - 17-1/2 inch (left to right - width rails)
- (4) - Nylon Glides/levelers
- (1) - Instruction sheet

Package B - Depth Rail (set of 4 per package)

Rail Set	Rail Depth (inches)	Outside Dimensions ⁽¹⁾	Screws Provided ⁽²⁾
B12"	10-1/2"	12-1/8"	10
B20"	17-1/2"	20-1/8"	20
B28"	23-3/4"	25-3/8"	20
B30"	20"	30-5/8"	20

Package C - Height Rail (set of 4 per package)

Rail Set ⁽¹⁾	Rail Height (inches)	Outside Dimensions ⁽¹⁾	Screws Provided ⁽²⁾
C04	10-1/2"	11"	10
C09	17-1/2"	19"	20
C11	22-3/4"	23-1/4"	20
C12	24-1/2"	25"	20
C14	20"	20-1/2"	20
C18	30"	35-1/2"	40
C24	45-1/2"	46"	50
C29	64-1/4"	64-3/4"	60
C35	84-3/4"	85-1/4"	70
C43	78-3/4"	79-1/4"	60

(1) **Net Rackable Space** in assembled RackFrame

(2) **Outside Dimensions** - Outside dimensions, measured from connecting corner to connecting corner.

(3) **Screws Provided** - Number of 10-32 x 5/8" rackmount screws & protective washers provided in Rail Set.

NOTE: All rack rails used in the RackFrameSystem are shorter than the expected width, depth & height due to the unique design of the RackFrame connecting corners.

